

ACME ADAPTORS AND ACME COUPLINGS

Marshall Excelsior



ME252A-16

Acme Adaptors with Strainer Screen

Part No.	Description
ME503A-16	3 1/4" M Acme x 2" MNPT
ME262A	3 1/4" M Acme x 3" MNPT
ME250A	3 1/4" M Acme x 1 1/4" FNPT
ME251A	3 1/4" M Acme x 1 1/2" FNPT
ME252A-16	3 1/4" M Acme x 2" FNPT
ME508A-24	3 1/4" M Acme x 3" FNPT
ME251-02	Replacement screen for adaptors
ME251-03	Replacement snap ring for screen

Brass Filler Couplings



ME120

Fisher Part No.	Marshall Excelsior Part No.	Type of Acme Nut	Description
M100	ME100	Knurled Brass Nut	1 1/4" F Acme x 3/8" MNPT
M101	ME101		1 1/4" F Acme x 1/2" MNPT
M110	ME110		1 3/4" F Acme x 1/2" MNPT
M111	ME111		1 3/4" F Acme x 3/4" MNPT
M112	ME112		1 3/4" F Acme x 1" MNPT
-	ME110C	EZ Grip Brass Nut	1 3/4" F Acme x 1/2" MNPT
-	ME111C		1 3/4" F Acme x 3/4" MNPT
-	ME112C		1 3/4" F Acme x 1" MNPT
-	ME120		2 1/4" F Acme x 1 1/4" MNPT
M120	ME120S		2 1/4" F Acme x 1 1/4" MNPT - Steel Nipple
-	ME130B		3 1/4" F Acme x 2" MNPT
M130	ME130		3 1/4" F Acme x 2" MNPT - Steel Nipple
M664-24	-		4 1/4" F Acme x 3" MNPT

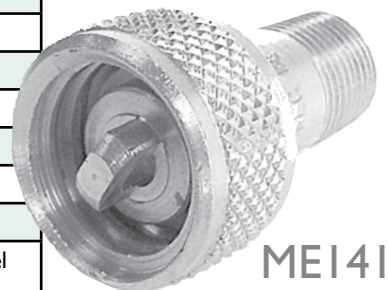
Steel Filler Couplings

Fisher Part No.	Marshall Excelsior Part No.	Type of Acme Nut	Description
-	ME635-4	Heavy Duty Grip Steel	1 3/4" F Acme x 1/2" MNPT
M653-6	ME635-6		1 3/4" F Acme x 3/4" MNPT
M635-8	ME635-8		1 3/4" F Acme x 1" MNPT
-	ME635-10		1 3/4" F Acme x 1 1/4" MNPT
M631-6	ME111S	Knurled Steel	1 3/4" F Acme x 3/4" MNPT
M631-8	ME112S		1 3/4" F Acme x 1" MNPT
-	ME111SC	EZ Grip Steel	1 3/4" F Acme x 3/4" MNPT
-	ME112SC		1 3/4" F Acme x 1" MNPT
-	ME113SC		1 3/4" F Acme x 3/4" FMNPT
M121	ME121S		2 1/4" F Acme x 1 1/4" MNPT
M133	ME130S		3 1/4" F Acme x 2" MNPT
M634-24	-		4 1/4" F Acme x 3" MNPT



Brass Vapor Couplings

Fisher Part No.	Marshall Excelsior Part No.	Description
M140	ME140	1 1/4" F Acme x 3/8" MNPT Vapor Return
M394	-	1 1/4" F Acme x 3/8" MNPT - 6 1/4" long
M141	ME141	1 1/4" F Acme x 1/2" MNPT Vapor Return
M150	ME150	1 3/4" F Acme x 3/4" MNPT Vapor Return
M151	ME151	1 3/4" F Acme x 1" MNPT Vapor Return
M160	-	2 1/4" F Acme x 1 1/4" MNPT Vapor Return
-	ME160S	2 1/4" F Acme x 1 1/4" MNPT Vapor Return - Brass Nut/Steel Nipple



Steel Vapor Couplings

Fisher Part No.	Marshall Excelsior Part No.	Description
---	ME140S	1 1/4" F. Acme x 3/8" MNPT Vapor Return Coupling
M640-4	ME141S	1 1/4" F. Acme x 1/2" MNPT Vapor Return Coupling
---	ME150S	1 3/4" F. Acme x 3/4" MNPT Vapor Return Coupling
---	ME646-4	1 3/4" F. Acme x 1/2" MNPT Vapor Return Coupling- 7" O.A.L.
M646-6	ME646-6	1 3/4" F. Acme x 3/4" MNPT Vapor Return Coupling- 7" O.A.L.
M646-8	ME646-8	1 3/4" F. Acme x 1" MNPT Vapor Return Coupling- 7" O.A.L.
---	ME646-10	1 3/4" F. Acme x 1 1/4" MNPT Vapor Return Coupling- 7 1/4" O.A.L.
M641-8	ME151S	1 3/4" F. Acme x 1" MNPT Vapor Return Coupling- 3 1/4" O.A.L.
---	ME160S	2 1/4" F. Acme x 1 1/4" MNPT Vapor Return Coupling- 3 3/8" O.A.L.



FISHER

