

Fisher Large Relief Valve

Types H282 and H5112 internal spring relief valves can be used in the Combo Joe® relief valve manifold or as separate units on stationary tanks. The valves are very similar except for construction materials - H282 of brass (LP-Gas service) and H5112 of steel (NH₃ or LP-Gas service). When used in ASME tanks, internal spring relief valves have only the poppet and part of the body outside the tank. The adjusting screw and all other parts are inside the tank, safe from tampering. Field-Repairable valve seats allow for seal replacement without affecting relief setpoint. The drain deflector is furnished as standard on both the H282 and H5112. Type PI04-24 pipeaway adaptor (3" FNPT) is available for use with either valve. Use a 11011 metal raincap for the top of the stack.

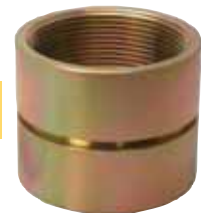
H282 or H5112



11011



PI04-24



Note - NFPA 58 E.2.3.2
Since no mechanical device can be expected to remain in operative condition indefinitely, it is suggested that pressure relief valves on containers of more than 2000 gallon water capacity be tested at approximately 10 year intervals

bergquistinc.com | 800 537 7518

Fisher Large Relief Valves

Type	Container connection	Service	Construction Material	Start-to-Discharge Setting	Flow Capacity		For tank with area up to: ¹
					UL	ASME	
H282-250	2" MNPT	LP-GAS	Brass	250 psig	11,057	9,651	664 SQ. FT.
H282-275				275 psig	12,221	10,571	750 SQ. FT.
H5112-250		NH ₃ or LP Gas	Stainless Steel	250 psig	11,057	9,651	664 SQ. FT.
H5112-265				265 psig	11,814	10,203	719 SQ. FT.
H5112-275				275 psig	12,221	10,571	750 SQ. FT.

1. Based on UL flow rates.